

Chevron Love Hat

By Julia Vesper



MATERIALS and a note about **YARN**: This little number is designed with using up scraps and little bits of leftover stash yarn in mind. You can use as many colors as you like, or as few as two. If your colors do repeat, carry yarn up the inside, to reduce the ends you'll have to weave in. Get colorful, and creative!

The Hat in the foreground was knit in Rowan's Felted Tweed, and the hat in the background was knit in my handspun yarn. Because this hat is done in fairisle colorwork, it is okay to use yarns of similar, if not exactly the same gauges. My handspun varied between sport and light DK weight yarns, but when worked together created a nice even fabric. The lining in the handspun version was knit using Dale Yarn Baby Ull, the lining on the Felted Tweed hat in Rowan's Cashsoft DK. This fabric will be against the forehead, so whatever you choose, choose something soft!!

SIZING: These hats both measure 22", but you can easily customize the size by adding or subtracting stitches in multiples of 6 stitches for each inch.

NEEDLES: US4 (3.5mm) 16" Circular needles, US 6 (4mm) 16" circular needles, and Double Pointed Needles. or size needed to obtain gauge. Both sample hats were knit on US 6 (4mm) 16" circular needles, changing to Double Pointed needles when necessary.

GAUGE: This hat is knit to a stitch gauge of 6 St/In. Row gauge really isn't critical, as hat can be knit to any length needed to fit the head of its intended recipient.

The **PATTERN**:

On smaller 16 inch circular needle, CO 132 St. Join into round, being careful not to twist stitches, and place marker. Begin working in Stockinette Stitch, knitting every round, for 1.5 to 2 inches, or whatever you would like to length of the inside of the hem facing to be.

Purl one round.

This is the turning row; it will create a nice little edge at the bottom of your hat. If you would like it to be a contrast color, purl this row in the yarn you used to knit the inner facing. If you would like it to be the same as the first color of the chevron pattern, purl it with the yarn you will use for that.

Break lining yarn. With larger needles, Join in first color for Chevron Pattern, and knit two rows. Begin working Chart A, repeating around, switching colors where needed. The charting is shown for four colors, but use as many as you like!

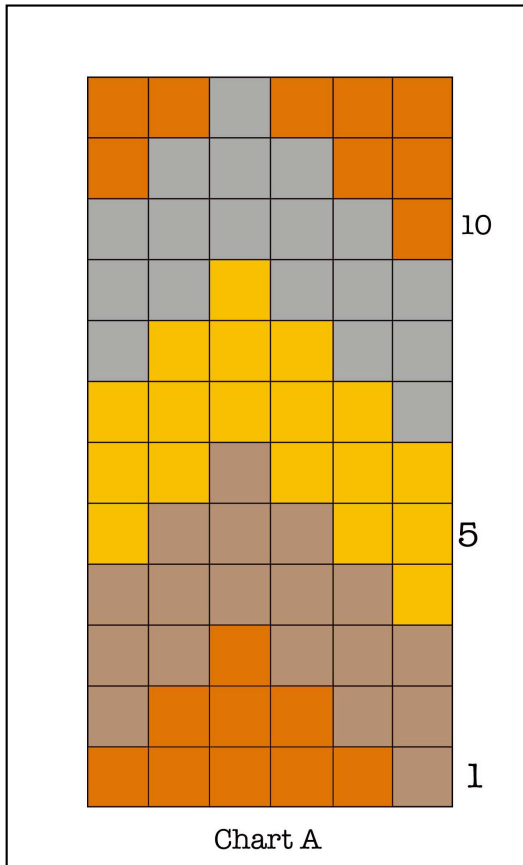
When the main knitting of the hat matches the length of the facing, fold up the facing, and knit each stitch together with it's matching cast on stitch, continuing in chevron pattern as you do so. Take special care to make sure your stitches line up, or the facing will bias, and will not lie as flat.

Continue knitting Chart A until your hat measures the length needed to fit intended head, about 5 to 6 inches for average adult hat. Begin *Crown Decreases, Switching to DPNs when needed. When finished with Crown Decreases, break yarn, thread through remaining stitches and pull tight. Weave in all ends. Wear proudly.



Chevron Love Hat

By Julia Vesper



ABBREVIATIONS:

CO- Cast On

ST.- Stitch

K2TOG- Knit Two Stitches Together

SSK- Slip 1st St as if to knit, Slip 2nd St as if to purl, place back on left needle, and knit them together.

DPN- Double Pointed Needles

*Crown Decreases~

These decreases create 4 panels at the crown of your hat, there are 8 Dec Per Round.

Begin decreases, ending with Row one or equivalent, and keeping in Chevron pattern (Chart A) throughout.

*** K1, K2Tog, K2⁷, SSK, K1 *** repeat from * to * 3 times more.

Continue decreasing every round in this manner, until 4 ST remain. Break yarn and draw through remaining Stitches.